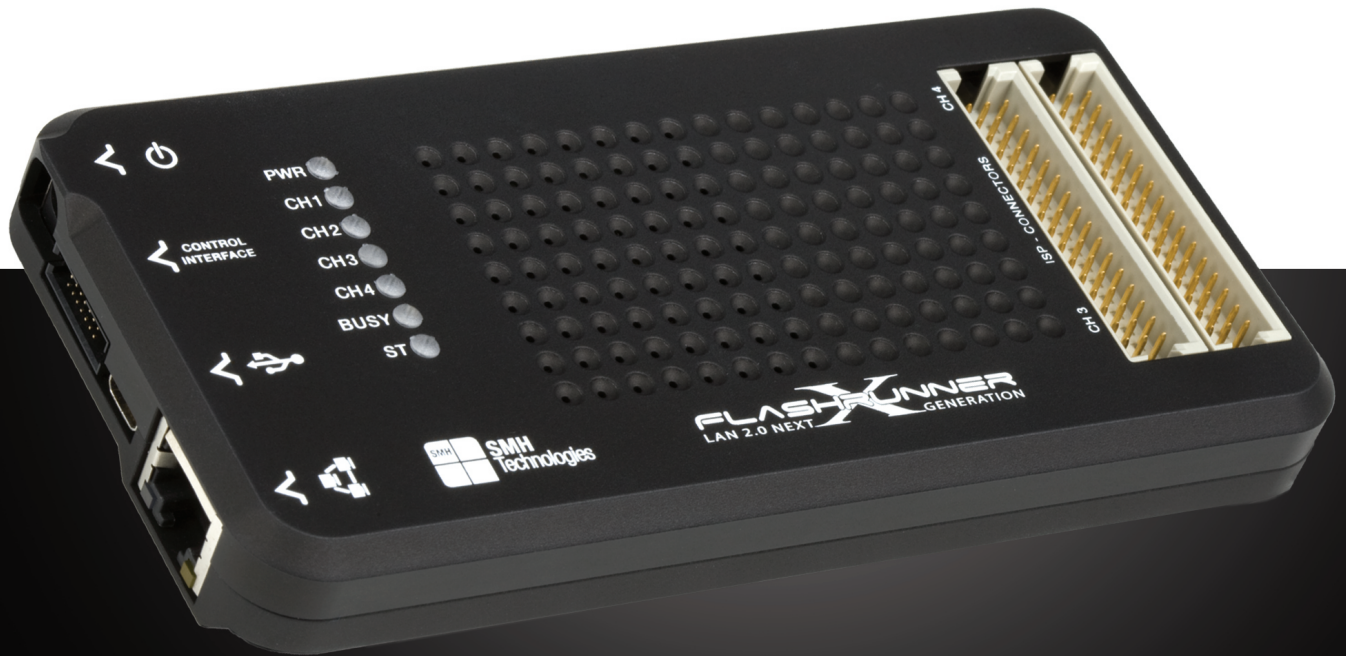


# FLASHRUNNER

LAN 2.0 NEXT GENERATION



## Overview

FlashRunner LAN is the most popular programmer used in the programming industry. On the market from the last 9 years, FlashRunner LAN has obtained an incredible success.

SMH Technologies made a huge investment to realize its evolution, employing the most advanced and highly patented technology from FlashRunner 2.0.

FlashRunner LAN 2.0 NEXT GENERATION is now available with high performances and unique flexibility, configurable from 1 to 4 independent and parallel channels which can be increased step-by-step through an online remote session.

Designed with its thin and compact size, this programmer has been specifically engineered to easily suit in the fixture, simplifying the hardware integration process.

## Why FlashRunner

FlashRunner LAN 2.0 NEXT GENERATION combines the most advanced technology and the decennial experience of SMH Technologies in ISP programming, providing at least three years of technological competitive advantage in the market.

The programmer's new powerful technology can be easily integrated inside the fixture. In addition, the user has the possibility to enable from 1 to 4 independent and parallel channels according to his necessities. Thanks to this extreme flexibility, the cost of the solution will adjust to the production needs, optimizing the programmer's efficiency also in respect of the economic investment.

## Main Features

- Fast programming speed
- Easy fixture integration
- Ultra-compact design
- Standalone control
- Serial Numbering
- Antipiracy system
- Data-Integrity function
- High connectivity
- Friendly user experience (interactive GUI)



INTEGRATION



HIGH  
SPEED



INDUSTRIAL  
STRENGTH



UNIVERSAL



SMH  
Technologies™

UNIVERSAL PRODUCTION IN-SYSTEM PROGRAMMING

## Hardware Features

- Independent ISP lines for each channel
- 8 digital I/O lines
- Two programmable output voltage lines
- 1 GB on-board Dynamic Memory
- Up to 256 GB storage memory
- On-board timekeeper and calendar for time-stamped log file
- High-speed LAN Communication Interface (1 Gb)
- USB communication interface (optoisolated)
- Fixture interface for standalone operations (optoisolated)
- Power voltage and current measure for each channel
- Integrated relay barrier control
- Operation status LEDs for each channel
- Two 48-pin DIN In-System Programming connectors

## Software Features

- FR LAN 2.0 NXG WorkBench: the new user friendly Graphical User Interface (Windows and Linux compatible)
- Based on Embedded Linux operating system
- Interface Library to control the programmer directly from user's test applications
- Serial numbering
- Optional customer binary file cryptography to ensure antipiracy protection
- Log file and Production Report file
- ISP channels expansion activation license
- Memory dump and compare functions
- Easy integration with C/C++ DLL
- ASCII-based commands

## A new friendly interactive GUI (Graphic User Interface)

The new GUI interface cuts off overall configuration efforts, guiding the customer in creating a working project in few mouse clicks and detecting mismatches between the target device and customer's firmware, as well as power supply setup.

## Different Configurations

FlashRunner LAN 2.0 NXG hardware capability allows the user to choose the configuration from 1 to 4 independent and parallel channels, according to the production project.

It is possible to purchase FlashRunner LAN 2.0 NXG with 1 enabled channel, and add up to 4 channels through a simple online remote session. In this way, the cost of the solution will adjust to the production needs, optimizing the programmer's efficiency also in respect of the economic investment.

## Related Services

FlashRunner LAN 2.0 NXG special features allow the programmer to share its channels in order to program big-size memories such as eMMC and NAND memories, by employing the required programming ISP lines.

### SMH Technologies

Via Giovanni Agnelli, 1 - 33083 Villotta di Chions (PN) Italy  
Phone +39 0434 421 111 - Fax +39 0434 639 021  
info@smh-tech.com - [www.smh-tech.com](http://www.smh-tech.com)

